

WELCOME TO CLARION COUNTY



Clarion Area Chamber of Business & Industry

2023-2024

Inside this issue:

Rich Beginning	2
Natural Highlights	4
People of Clarion Co.	4
Government	5
Autumn Leaf Festival™	5
Economy & Labor	5
Transportation	6
Higher Education	6
Clarion University	7
K-12 Education	7
Pre-Schools	8
Religion	8
Campgrounds	10
Emergency Services	11
Important Numbers	12
Toll-Free Hotlines	12
Medical Care	13
Staying Fit	13
Cook Forest	14
County Map	15
East Brady	16
Emlenton	17
Knox	18
New Bethlehem	19
Rimersburg	20
Sligo	21
To Do - Clarion	22
To Do - Foxburg	24
To Do - Cooksburg	25



Clarion County, created on March 11, 1839 from parts of Venango and Armstrong Counties, was the 54th county formed in Pennsylvania, and received its name from the Clarion River that runs through it. The town of Clarion was created specifically with the purpose of serving as the county seat. By 1841 the borough of Clarion boasted a population of almost 750 residents. Today, there are almost 5,000 residents in the borough, with almost 40,000 residents throughout Clarion County.

The community of Clarion enjoys a small town lifestyle, but is also easily accessible to the two largest cities in western Pennsylvania as it is located just under 100 miles northeast of Pittsburgh and just over 100 miles southeast of Erie.

The area has been a known producer of natural gas, oil, lumber, and coal.

Clarion is a great place to live, work, and raise a

family. Some of the most beautiful land in Pennsylvania as well as truly wonderful opportunities for hunting and fishing in the state can be found in the area. There are over 159,000 acres of forest here, of which the largest portion lies within Cook Forest.

A wide selection of shops and restaurants of many genres can be found in the Clarion Area. Downtown Clarion is virtually picture perfect on Main Street, where you'll find old fashioned charm everywhere you look. The merchants are friendly, helpful, and always happy to have you stop in and just take some time to look around. Exit 62 off of I-80 has many options for shopping and dining for all ages with a wide selection of merchandise offered by major retailers and independently owned shops alike.

There are over 80 churches of various denominations in the area, giving residents countless worship opportunities that enable participants the chance to serve and enrich their lives. Religious leaders make themselves available to provide guidance, offer assistance to those in times of need, and encourage community togetherness.

Every fall, anywhere from 250,000 to 500,000 people flock to Clarion for the Autumn Leaf Festival™. This nine-day, award-winning event celebrates the area's fall foliage and features the largest daytime parade in Pennsylvania as well as a week-long carnival, a Farmer's and Crafter's Day, a car cruise, tractor show, art show, and more.

Take some time to peruse the pages of this brochure, where you will find more information on the above topics as well as a reference guide on the many communities in the county, a phone reference guide, as well as other information.



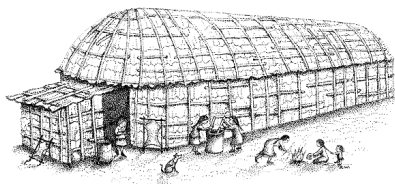
A Rich Beginning For Clarion



Delaware Indian tribe

Before the time of the first settlers to this area, the Seneca and Delaware Indians used these lands as hunting grounds for deer and elk. The land proved a neutral dividing ground between the two tribes. Although the Senecas claimed the land as theirs, their "long cabin", located in what is now Venango County, was too far away to claim more than a nominal possession of the area.

Therefore, from time to time they would hold encampment on the lands for the purposes of hunting or warlike missions, and in their absence, the Delawares or even the Shawanese hunters would take their place.



Seneca "long cabin"

Many Indian relics have been found in the area, indicating that it was in fact a habitat for some aboriginal tribe. Indian graves, consisting of piled stones and containing items such as tomahawks and arrow heads, were discovered in the area. On a local farm, flint hatchets and arrowheads in large quantities over a confined area were found, seeming to indicate a warlike bat-

tle between two tribes.

At the time the first settlers made their way into our area in 1801, the region was a wilderness. Pioneer settlers were predominately Scotch-Irish and German, and came here from the older counties of the state.

Transportation was of great im-



Lake Erie, Franklin & Clarion Railroad

portance to the development of Clarion County. Steamboats were used to reach the area during certain times of the year. The construction of the first highway in the area began in 1803, the road opened in 1805, and the first bridge over the Clarion River was constructed in 1821. A turnpike, which ran from central Pennsylvania to Erie, passed through Clarion County. After the Civil War, the Allegheny Railroad reached into southern Clarion County.

The first post office in the area opened in 1818 at a home located two miles east of Strattanville. A mail line existed much earlier, running from Meadville to Kittanning and passing through this area, but there was no actual postal service here.

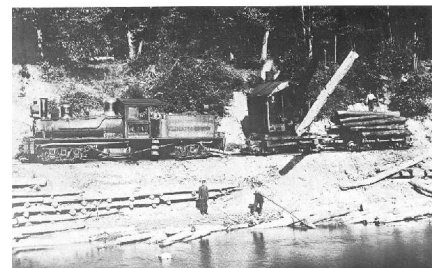
As mentioned on the previous page, Clarion County was formed in 1839 and was the 54th county in Pennsylvania. The southern

boundary of the county is made up of the Allegheny River as well as Butler and Armstrong Counties. Jefferson County creates the eastern border.

Again, Clarion County received its name from the Clarion River that runs through it. Historically, it is said that the river was known as Stump Creek and Toby's Creek. While surveying for a road, surveyors camping by the river noted how the rippling of the water was made mellow by the wall of timber that spanned both sides of the river. One man said it sounded like a distant clarion. The river has been known as the Clarion River ever since.

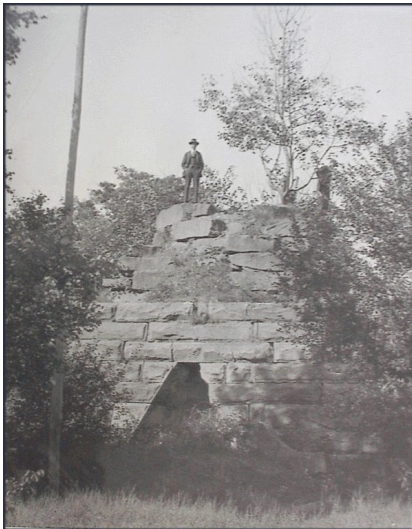
The earliest means of livelihood, other than farming, was lumbering. With a population of nearly 15,000 in 1839, settlers who were predominately Scotch-Irish, made their living through farming and small sawmills. The large stand of virgin timber in the area attracted the lumbermen, who often tied the lumber together and floated their lumber rafts from many sawmills that existed here to market at Pittsburgh where it was then sold. Small kegs of pine tar were also exported to Pittsburgh by river barges.

After the lumber industry came the iron industry. Clarion County became known as "The Iron



Lumber being floated down the river

A Rich Beginning For Clarion (cont.)



Helen "Highland" Furnace circa 1938

County" due to the many iron furnaces here, more than any other county in the state.

The county's population began to grow due to the rise of these industries, and increased even further as oil and later the coal and glassmaking industries began to flourish. Prior to the Civil War, Clarion County had several iron furnaces. However, the business declined with the emergence of the steel industry after the Civil War. Some ruins of the old furnaces still stand today.

Clarion County really made a name for itself after the "Oil Boom" in 1859. Colonel Edwin



The original Clarion County Courthouse

L. Drake struck oil while drilling in Titusville and Clarion County at one time was considered one of the region's largest oil producers. Clarion had over fifty wells by 1876.

In addition to an abundant oil belt, the county also has extensive gas fields, sand for glass making, good fire clay and bituminous coal reserves.

The original residents of Clarion constructed the county courthouse in 1840. After a devastating fire, the courthouse was rebuilt in 1859 with the addition of a lighted clock.

The first jail was a plain structure of square cut sandstone. After falling into disrepair, the



Clarion County Jail circa 1873

jail was torn down and its stones used in the foundation of the courthouse that stands to this day. The jail was rebuilt in 1873, and in only one execution was carried out there for the crime of murder that occurred in Rimersburg in 1909.

In the early 1900's, Thomas Edison would travel from time to time to Clarion to the Poulain Music store for demonstrations. This store was the only music store north of Pittsburgh to carry Edison's line of products.



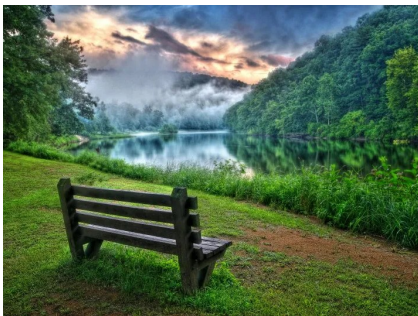
In 1941, Roy Rogers and Trigger appeared at the Orpheum Theater on Main Street (built in 1925 and closed in 1998). Trigger accidentally kicked a hole in the movie screen and it had to be replaced.

Clarion County enjoys a rich history—much more than could ever fit on these pages. However, hopefully you can see a glimpse of what the area can offer you as you peruse this packet.



Clarion County Courthouse - as it looks today

Natural Highlights



Cook Forest State Park

The physical features of the area are unbelievable! The Clarion area has some of the most beautiful land in Pennsylvania. There are over 159,000 acres of forest of which the largest portion is Cook Forest. Cook Forest contains about 7,000 acres of ancient forest. It boasts the largest stand of virgin white pines east of the Mississippi. The majority of the remaining forest in

Clarion County is Pennsylvania State Game lands. This truly is some of the best hunting and fishing in the state.

The Clarion and Allegheny Rivers provide many recreational and scenic areas within the county. Clarion River alone is approximately 110 miles long, and hardly a summer's day goes by without seeing someone boating, swimming, or fishing in the river. These rivers, in combination with the county's forest areas, have contributed

significantly to the local economy.

The county's area is 607 square miles, its climate is temperate with four distinct seasons, and the average annual temperature is fifty-five degrees Fahrenheit. January has average temperatures of twenty-two degrees Fahrenheit and the average July temperature is a modest seventy degrees. Average annual rainfall is forty-four inches.



Clarion River

The People of Clarion County



Clarion girl enjoying the games at the I Love Clarion festivities.

The population of the county is concentrated around the borough of Clarion which is located slightly northeast of the center of the county. The remainder of the population is spread throughout the county with some concentration of populations along the southern edge and mid-western portion of the county.

The full time, year-round population in Clarion County is around 37,000 residents with a little over 3,800 living in Clarion Borough. Approximately 9,000 live within three miles of the center of Clarion Borough (Clarion Township, Highland Township, Paint Township, Millcreek Township, and Strattanville Borough).

Clarion County boasts of its friendly and accepting people. The low, almost non-existent crime rate and safe streets are an immediate draw for most newcomers.

Residents here are known for coming together. Whether it be firemen standing at an intersection holding a boot drive to collect money for a family who has fallen victim to fire in their home, neigh-

bors welcoming newcomers to the area, or entire communities getting together for an annual festival, the people of this area are some of the friendliest you will meet.

We invite you to come experience a community at its friendliest when you visit Clarion County!



Residents of all ages come together and enjoy the "Tournament of Leaves" Parade each year.

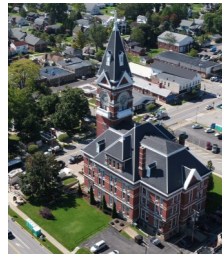
Clarion County Government

Clarion County government is a seven-person strong, council-type government.

Three county commissioners provide the chief governing body of Clarion County. The commissioners hold a primarily administrative position enhanced by legislative powers. They are given certain policy-making authority to provide local services and facilities on a county-wide basis.

A portion of the county

administrative responsibilities is shared with other county officers and agencies. The treasurer and the appropriate row office are in charge of fixing the salaries of county employees and determining the number of employees to hire.



The acting mayor of Clarion is Bill Miller His office is located at 644 Main Street, Clarion, PA 16214. He can be reached at 814-226-7172.

Clarion's U.S. Senators are John Fetterman (D-PA) and Robert Casey, Jr. (D-PA). Our congressman is Glenn "GT" Thompson and the State Senator is Scott Hutchinson. Clarion's State Representative is Donna Oberlander.

The Allegheny Toyota Autumn Leaf Festival™

For 70 years Clarion has been known for its Autumn Leaf Festival™. The festival celebrates the natural beauty of the fall foliage, something that Clarion is famous for.

The festival, held in late September or early October, is held annually. The event features the largest parade in the area which attracts local high school bands plus top notch specialty units from far and wide. One of the main highlights of the

parade is the assortment of floats depicting the festival's theme. In addition, there is a week-long carnival plus food concessions,



Annual Farmers & Crafters Day

Farmers and Crafters Day, Junior Olympics, an Autorama Cruise-In, motorcycle and tractor shows, and much more.

The festival also celebrates PennWest Clarion University's homecoming which includes the annual homecoming football game at the memorial stadium.

Autumn Leaf Festival™ is a week of fun and entertainment for the whole family!

Economy and Labor



Most of the economy in Clarion is based on its various services, however there are several industries that remain productive. In particular, it is based on education, coal and timber production, manufacturing, and

tourism.

Clarion County's civilian labor force as of December 2022 is 16,433. Its unemployment rate is 4.1%. In 2022, per capita personal income is \$49,611, the median household income is \$44,866, and the poverty rate is 28.13%. (Source: PA Dept. of Labor and Industry website workstats.dli.pa.gov)

Several non-profit industrial and economic development agencies work to help businesses in Clarion County.

These agencies consist of:

Clarion Area Chamber of Business & Industry: 814-226-9161

Clarion County Economic Development Corporation: 814-226-9045

Northwest Pennsylvania Great Outdoors: 800-348-9393

Small Business Development Center: 814-393-2060

Transportation

Roadways

Clarion County has 27.9 miles of interstate highways, 620 miles of state and federal highways, and 659 miles of secondary and municipal roads.



Exit 62 of Interstate 80 at Clarion, Pa

Interstate 80 has made Clarion's rural charms easily accessible to millions of travelers. The majority of Clarion's visitors come from Eastern Ohio, Southwestern Pennsylvania, New York, and Canada. I-80 runs east and west and has six exits in Clarion County, more than any other

county in the state. One of the exits, Exit 62, is known as the "Oasis of the Interstate" because it offers more services than any other exit in the state and because it is located just a mile south of the rich retail district of downtown Clarion.

Besides I-80, highways include the following: US 322 runs east and west through the Clarion Borough; PA 66 runs north and south through the center of the county; and PA 68 runs southwest and northeast from Butler to Clarion.

Rail

In an attempt to further encourage tourism in the Allegheny National Forest Area, the Knox and Kane Railroad once ran a passenger train from Marienville, PA to the Kinzua Bridge with a stop in Kane. The railroad stopped transporting passengers in 2003 due to a tornado that touched down there

and destroyed the large bridge in Kinzua.

Air

The Clarion County Airport is a general aviation airport. It hosts a 41,000-foot runway, night landing lights, and a friendly daytime staff. The nearest commercial aviators include DuBois Airport in Jefferson County (30 miles east of Clarion) and Chess-Lamberton Airport in Franklin (30 miles northwest of Clarion). Pittsburgh International and Cleveland International are both approximately 100 miles away.



Clarion County Airport

The History of Higher Education in Clarion



The original Carrier Seminary of Western Pennsylvania

On September 6, 1867 the Carrier Seminary of Western Pennsylvania opened its doors as a coeducational institution. Other well known schools in Clarion County at that time were The Reid Institute, Clarion Collegiate Institute, and The Callensburg Institute. Now featuring

an enrollment of over 2,600 students, Clarion University has gone through multiple incarnations since its start as Carrier Seminary.

In April of 1886, the Seminary was transformed into Clarion Normal School, and its mission was to train teachers.

Clarion became a college-level institution in 1920. On May 28, 1929, for obvious marketing purposes, The Normal School officially changed its name to Clarion State Teachers College.

The number of academic choices at has broadened over the years. In order to encompass the variety of majors, the school changed its name to Clarion State College in 1963 after new legislation allowed them to develop programs in the liberal arts and at the graduate level



as a newly christened state college. In 1983, under the Pennsylvania State System of Higher Education, Clarion State College officially became known as Clarion University of Pennsylvania, and was known simply as Clarion University. Then in 2021, Clarion merged with two other universities and became Pennsylvania Western University.



PennWest Clarion University Today



PennWest Clarion University is an important part of Clarion County. The University has the best of both worlds. It is surrounded by peaceful countryside, but it is also close to the downtown shopping, food, and entertainment of Clarion.

The University boasts a 17:1 student to teacher ratio and an average class size of fewer than twenty. Clarion University is nationally recognized for its business, communications, and teaching departments.

Over 130 clubs and organizations exist at the University including academic, athletic, Greek, political, multicultural, service, and other special interest groups.

Athletics are popular at Clarion. Women's NCAA Division II sports include: basketball, cross country, softball, swimming and diving, tennis, track and field, volleyball, soccer, and golf. Men's NCAA Division II sports include:

baseball, basketball, football, golf, swimming and diving, and Division I wrestling. More than 40 intramural sports are played in the new, six million dollar student recreation center.

For more info: www.clarion.edu



K-12 Education

Allegheny Clarion Valley School, 776 State Rt 58, Foxburg, PA 16036 (724) 659-5820 or (724) 659-4661 Enrollment: 329 (HS) & 350 (Elem)

Serving: Foxburg, Park & St. Petersburgh Borough, Petty, Richland, Hovey, Allegheny, Scrubgrass, Venango & Richland-Clarion Townships.

Clarion Area School District, 219 Liberty St, Clarion, PA 16214 (814) 226-6110 (HS) or (814) 226-8118 (Elem) Enrollment: 389 (HS) & 390 (Elem)

Serving: Clarion Borough, Highland, Monroe & Paint Townships.

Clarion-Limestone School District, 4091 C-L School Rd, Strattanville, PA 16258 (814) 764-5111 (HS) or (814) 764-6006 (Elem) Enrollment: 407 (HS) & 4990 (Elem)

Serving: Strattanville & Corsica Boroughs, Highland, Limestone, Monroe, Paint & Union Townships.

Keystone School District, 451 Huston Ave, Knox, PA 16232 (814) 797-5921 Enrollment: 464 (HS) & 556 (Elem)

Serving: Callensburg, Knox & Shippenville Boroughs, Ashland, Beaver, Elk, Licking & Salem Townships.

North Clarion School District, 10439 Rt. 36, Tionesta, PA 16353 (814) 744-8544 (HS) or (814) 744-8541 (Elem) Enrollment: 273 (HS) & 336 (Elem)

Serving: Knox, Farmington & Washington Townships

Redbank Valley School District, 920 Broad St, New Bethlehem, PA 16242 (814) 275-2426 Enrollment: 540 (HS) & 588 (Elem)

Serving: New Bethlehem & Hawthorn Boroughs, Porter & Redbank Townships. In Armstrong County: Mahoning, Madison & Redbank Townships, & Southern Bethlehem Borough.

Union School District, 354 Baker St. Suite 2, Rimersburg, PA 16248 (814) 473-6311 Enrollment: 276 (HS) & 375 (Elem)

Serving: Rimersburg & Sligo Boroughs, Madison, Piney & Toby Townships.

Clarion County Career Center, 447 Career Rd, Shippensburg, PA 16254 (814) 226-4391 Enrollment: 399

Serving these school districts: Allegheny-Clarion, Clarion Area, Clarion-Limestone, Keystone, Redbank, North Clarion & Union Schools.

Immaculate Conception School, 729 Main St, Clarion, PA 16214 (814) 226-8433 Enrollment: 81 (K-8) & 9 (pre-school)

Serving these school districts: Allegheny-Clarion, Clarion Area, Clarion-Limestone, Keystone, Redbank, North Clarion & Union Schools.



Pre-Schools

AC Valley Pre-K Counts, 776
Route 58, Parker, PA 16049 (724)
659-0111

Clarion Christian Preschool, 114
Zion Road, Clarion, PA 16214
(814) 226-7789

Early Intervention Preschool, 800
Boundary Street, Clarion, PA 16214
(800) 226-4090

Headstart, 713 White Avenue,
Knox, PA (814) 797-5019

Immaculate Conception, 729 Main
Street, Clarion, PA (814) 226-8433

Jefferson-Clarion Head Start, 18
Western Ave, Brookville, PA 15825
(800) 628-6150

**Keystone Smiles Community
Center**, 420 Main Street, Knox, PA
(814) 797-2127

Little Bird Pre-School, 301 Broad
Street, New Bethlehem, PA
(814) 275-3515

New Bethlehem Head Start Center,
246 Broad Street, New Bethlehem,
PA (814) 275-1554

North Clarion Pre-K Counts
10439 PA-35, Tionesta, PA 16353
(814) 744-8541

Rimersburg Head Start, 88 School
Street, Rimersburg, PA 16248 (814)
473-4067

Riverview Intermediate Unit #6,
270 Mayfield Road, Clarion, PA
16214 (814) 226-7103

Sligo Pre-K Counts, 506 Penn
Street, Sligo, PA (814) 745-3445

St Joseph School, 72 Rectory
Lane, Lucinda, PA (814) 226-8018

Religion in Clarion County

Having been born of religion itself (the Quaker religion), it is no surprise that much of Pennsylvania continues spiritual practices, including Clarion County. Close to 100 different churches exist in the area. Denominations include Baptist, Catholic,



Episcopalian, Evangelical, Jehovah's Witness, Lutheran, Methodist, Nazarene, Presbyterian, other Protestant, non-denominational, and more.

For your convenience, we have included a list of churches in Clarion County.

Catholic Churches

Immaculate Conception (Clarion)
www.icclarion.org
814-226-8433

Clarion Campus Ministries, Immaculate
Conception (Clarion)
www.icclarion.org/Campus-Ministry

St. Charles (New Bethlehem)
814-275-3446

St. Eusebius (East Brady)
724-526-3366

St. Joseph Church (Lucinda)
www.st-joseph-lucinda.org
814-226-7288

St. Michael's (Fryburg)
814-354-2467

St. Nicholas (Crates)
814-856-3280

St. Richard's (Rimersburg)
814-473-6290

Protestant Churches

Alpha Assembly of God (Clarion)
www.clarionag.org
814-226-9691

Christian Fellowship Church
(Fairmount City)
724-543-5599

Epicenter Church (Clarion)
www.yourepicenter.org
814-226-6448

Hope Rising Community Church (Clarion)
www.hoperisingcc.com
814-297-8070

Leatherwood (New Bethlehem)
www.leatherwoodchurch.org
814-275-4371

Memorial Church of Our Father (Foxburg)
www.memorialchurchofourfather.org
724-659-4541

New Hope Church (Clarion)
www.clarionchurch.com
814-229-4141

Baptist Churches

Bethel Baptist (Sligo)
www.bethelbaptistchurchofsligo.com
814-745-2539

East Brady Baptist (East Brady)
www.eastbradybaptist.com
724-526-5475

First Baptist (Clarion)
www.fbcclarion.com
814-226-8233

First Baptist (New Bethlehem)
www.rvfbc.com
814-275-2959

First Baptist (Limestone)
www.fbc-limestone.com
814-764-5348

Grace Baptist (New Bethlehem)
814-275-4090

Church of Christ

Grace Community Church (Curlsville)
814-745-2897

Grand Avenue Church of Christ (Clarion)
814-227-2120

Nevin Memorial UCC (Fairmount City)
724-545-1542

Salem United Church of Christ
(Lamartine)
814-797-5075

United Church of Christ (Rimersburg)
814-473-3361

Church of God

Baker Street Church of God (Rimersburg)
814-473-3655

First Church of God
(New Bethlehem)
www.nbfirstchurchofgod.org
814-275-2023

Oakland Church of God (Distant)
814-275-3626
www.oaklandchurchofgod.org

Park Hill First Church of God (Parker)
www.parkhillcog.org
814-358-2470

Trinity Point Church of God (Clarion)
www.trinitypointchurchofgod.org
814-226-8672

Evangelical Congregational Church

Grace E.C. Church (Knox)
www.knox-graceec.org
814-797-5068

Bethany Crossroads Church (Emlenton)
www.bethanycrossroadschurch.org
814-797-1196

Venus Evangelical Church (Venus)
814-354-2820

Riverhill Evangelical Church (Shippenville)
814-226-5414

Jehovah's Witness

Kingdom Hall - Jehovah's Witness
(Clarion)
www.jw.org
814-226-7081

Lutheran Churches

Faith Lutheran (Venus)
814-354-2537

Grace Lutheran (Clarion)
www.growinggraceclarion.com
814-226-7548

Holy Trinity Lutheran (Shippenville)
814-782-3753

Salem Lutheran Church (Lamartine)
814-797-2282

St. Paul's Lutheran (Knox)
www.stpaulslutheran-know.weebly.com
814-797-1015

Nazarene Churches

Hawthorn Church of the Nazarene
814-365-5424

Sligo Church of the Nazarene
814-745-2373

Kossuth Faith Church of the Nazarene
(Cranberry)
814-797-5968

Presbyterian Churches

Concord Presbyterian (Parker)
814-358-2359

First Presbyterian Church (Clarion)
www.clarionfirstpresby.org
814-226-8145

First Presbyterian (East Brady)
724-526-5892

Rimersburg Presbyterian Church, PCUSA
814-473-3764

New Bethlehem Presbyterian
www.newbethlehempc.org
814-275-1880

New Rehoboth Presbyterian (Clarion)
814-764-3079

Reformed Presbyterian (Rimersburg)
reformedpresbyterian.org
814-473-3510

Sligo Presbyterian
www.pcusa.org
814-745-2771

Methodist Churches

First United Methodist (Clarion)
www.fumc-clarion.org
814-226-6660

Rimersburg United Methodist
www.rimersburgumc.com
814-473-6105

Redbank Valley United Methodist Ministry
(New Bethlehem)
www.rvumm.com
814-275-3900

Lawsonham United Methodist Church
(Rimersburg)
814-473-3653

United Methodist Church (Shippenville)
814-782-3202

Mt. Joy United Methodist (Knox)
814-797-2337

United Methodist Church (East Brady)
724-526-5646

Fairmount City United Methodist Church
www.rvumm.com
814-275-2767

United Methodist Church (Knox)
Knoxpamethodist.org
814-797-5386

Sligo United Methodist
814-745-2231

Strattanville United Methodist
814-764-3332

United Methodist Church (Parker)
www.parkerumc.org
814-358-2495

Carwick Wesleyan Church (Rimersburg)
wesleyan.org
814-473-6538

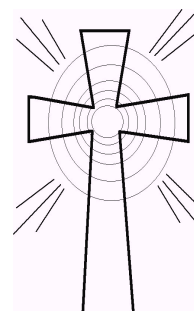
Church Campgrounds

Cherry Run Camp (Rimersburg)
United Methodist Camp
www.cherryruncamp.com
814-473-3470

Whitehall Camp & Conference Center,
Inc. (Emlenton)
Church of God
www.whitehallcamp.org
724-867-6861

*"The need of the moment is not
one religion, but mutual respect
and tolerance of the devotees of
the different religions."*

-Mahatma Ghandi



Campgrounds and Cabins

Clarington

Colors of the Forest RV Resort and Campground

(814) 752-2361
www.colorsoftheforestrvc.com

Hemlock Rest Cabins

(814) 752-2976
www.hemlockrestcabins.com

Hominy Ridge Lodge and Cabins

(800) 851-6377
www.hominyridge.com

Pine Crest Cabins

(814) 752-2200
www.pinecrestcabins.com

White's Haven Campground

(814) 752-2205
www.whiteshavencampground.com

Cooksburg

Black Bear Cabins

(814) 744-8017
www.blackbearcabins.com

Clarion River Suites

(814) 744-8007
www.clarionriversuites.com

Cook Forest Top Hill Cabins

(800) 531-1545
www.tophillcabins.com

Cook Riverside Cabins

(800) 680-0160
www.cookriverside.com

Deer Meadow Campground

(814) 927-8125
www.deermeadow.com

Evergreen Cabins & Mercantile

(814) 752-2247
www.evergreencabins.com

Gateway Lodge

(814) 744-8017
www.gatewaylodge.com

MacBeth's Cabins and Country Store

(800) 331-6319
www.macbethscabins.com

Stone Crest Cabins

(800) 634-2495
www.stonecrest-cabins.com

Clarion

Cook Forest Scenic Trailride, Dude Ranch, and Campground

(814) 226-5985
www.patrailride.com

Cranberry

YMCA Camp Coffman, Cranberry

(814) 677-3000
www.campcoffman.com

Emlenton

Gaslight Campgrounds

(724) 867-6981
www.gaslightcamping.com

Fairmount City

Redbank Valley Municipal Park

(814) 365-5924
www.redbankpark.com

Knox

Wolf's Camping Resort

(814) 797-1103 or (800) 850-9252
www.wolfscampingresort.com

Leeper

Cabins at Cook Forest

(814) 744-9429
www.cabinscookforest.com

Casa de Mara Rentals

(814) 744-9448
www.casademararentals.com

Limestone

Penn Wood Airstream Park

(814) 764-8963
www.pennwood.org

Lucinda

Kalyumet Campground

(814) 744-9622
www.kalyumet.com

Marienville

Forest Ridge Campground and Cabins

(814) 927-8340
www.forestridgecabins.com

Shippenville

Rustic Acres RV Resort and Campground

(814) 226-9850
www.rusticacrescampground.com

Sigel

At the Woods Cabin and Campground

(330) 323-2984
www.atthewoodscabins.com

Three Sisters Cook Forest Rental Cabins, Sigel

(724) 822-5619
www.threesisterscabins.com

Tionesta

Double R Campground

(814) 354-2574
www.doublercampground.com



Emergency Services

The Clarion Borough is serviced by an eight-person police force headed by Chief Mark Hall. The Clarion Borough Police Department is located at the borough office and can be reached at 814-226-9140.

Clarion County in general is protected by a force led by Sheriff Rex Munsee.

The State Police station is located two miles from downtown Clarion at Exit 62 off of I-80. They can be reached at 814-226-7611.

In addition, Clarion University has a well-staffed Public Safety Department.

The following is a list of other emergency services in the area:

Ambulance Services



Clarion Hospital EMS
Station 1
814-226-1248
clarionhospital.org/services

East Brady Area Ambulance Service
724-526-5065

Farmington Area Ambulance Service
814-744-8558

Jefferson County EMS
814-938-4111

Knox Area Volunteer Ambulance
814-797-1263

Perry Township Volunteer Ambulance
814-358-2725

Southern Clarion County Ambulance
814-473-6252
Sccas16248/webs/cp,

Other



Bureau of Alcohol,
Tobacco, Firearms &
Explosives.
Pittsburgh Group III
412-395-0600

Childline
800-932-0313

Clarion County Department of Public
Safety
814-226-6631

National Response Center:
Toxic Chemical & Oil Spills
800-424-8802

Pittsburgh Poison Center
800-222-1222
upmc.com/services/poison-center

County Emergency Management
Agency
Dial 911

-tune into your radio
during an emergency-

Surrounding Area Police



Clarion Barracks
Pennsylvania State Police
814-226-1710
www.psp.pa.gov

East Brady
724-526-5531

Emlenton Borough
724-867-0911

Knox Borough
814-797-1100
knoxborough.com

New Bethlehem
814-275-1180
newbethlehemboro.com/police

Rimersburg
814-473-3065
rimersburgborough.com

Fire Departments



Callensburg-Licking Twp.
Volunteer Fire Dept.
814-358-2400

Clarion Fire & Hose Company #1
814-226-8531

Corsica Fire Company
814-379-3763

Distant Area Volunteer Fire Department
814-275-2101

East Brady Volunteer Fire Dept.
724-526-5461

Emlenton Fire Department
724-867-2321

Farmington Twp. Volunteer Fire Co.
814-744-8514

Hawthorn Fire Department
814-365-5770
hawthorn560.com

Knox Volunteer Fire Co
814-797-5000

Limestone Fire Department
814-764-5415

Marienville Volunteer Fire Company
814-927-6609
www.marienville-fire.com

Millcreek Volunteer Fire Company
814-764-5191

New Bethlehem Fire Company
814-275-3000
Newbethlehemfire.com

Parker Volunteer Fire Dept Station 39
724-399-2800
visitparker.us

Perry Township Fire Company
814-358-2282

Rimersburg Hose Co.
814-473-3740

Shippenville-Elk Vol Fire Department
814-782-3233

Sligo Vol Fire Dept
814-745-2691

St. Petersburg Volunteer Fire
724-659-3876

Strattanville Volunteer Fire Company
814-764-5284

Summerville Volunteer Fire
814-856-2250

Washington Twp Volunteer Fire
814-354-2150
wtvfd.org



Additional Clarion County Numbers

Adult Probation

814-226-6020

Charitable Deeds

www.charitabledeeds.weebly.com

814-797-0286

Clarion Borough Office

814-226-7707

clarionboro.org

Clarion Co. Area Agency on Aging

814-226-4640

clarionaging.com

Clarion County Children & Youth

814-226-5150

Clarion County Courthouse

814-226-4000

www.co.clarion.pa.us

Clarion County Jail

814-226-9615

Clarion County Park

814-226-4000 x2854

Clarion County's Promise

814-223-1590

Clarioncountyspromise.org

Clarion Free Library

www.clarionfreelibrary.org

814-226-7172

Clarion County Housing Authority

814-226-8910

clarionhousing.com

Community Action Agency

814-226-4785

Domestic Relations

814-226-1030

Governor's Office

717-787-2500

PA CareerLink

pacareerlink.pa.gov

814-678-5050

Pennsylvania Great Outdoors

Visitors Bureau

814-849-5197

visitpa.com

Sewage Treatment Plant

Clarion, PA 16214

814-226-8181

State Representative

Donna Oberlander

www.repoberlander.com

814-226-9000

The ARC of Clarion and Venango Counties

(Disability Advocacy)

www.thearcclarion.org

814-226-7033

United Way of Clarion County

814-226-8760

wuclarionco.org

Waste Management (recycling)

www.advanceddisposal.com

814-226-4602

Military Support Programs

Clarion Co. Dept. of Veteran Affairs

814-226-4000 Ext. 2601

VA Outpatient Clinic

814-226-3900

va.gov/butler-health-care

Veterans of Foreign Wars—Spec.

Ross A. McGinnis Post 2145

814-226-8475



Toll-Free Hotlines

Autism Services

866-539-7689

Bureau of Consumer Protection

1-800-441-2555

Child Abuse Hotline

1-800-932-0313

Child Support Enforcement Helpline

800-932-0211

CHIP Helpline

1-800-986-5437

Commonwealth Information

1-800-932-0784

Crime Stoppers

1-800-472-8477

www.pacrimestoppers.org

Dept of Human Services Help Line

800-692-7462

Disability Services

8000-753-8827

Estate Recovery Program

800-528-3708

Medical Assistance Helpline

1-800-253-3488

Mortgage Assistance (Emergency)

1-800-342-2397

PACE Information

1-800-225-7223

PennDOT

1-800-349-7623

PA Tax Information

1-888-728-2937

PA State Parks

1-888-727-2757

Pharmacy Services

800-537-8862, option 1

PHEAA Student Grants/Loans

1-800-692-7392

Property Tax/Rent Rebate

1-888-222-9190

Social Security Information

1-800-772-1213

Unemployment Compensation Fraud Hotline

1-800-692-7469

Veterans Benefits (Federal)

1-800-827-1000

Veterans Information (PA)

1-800-547-2838

Welfare - Income Assistance

(Food Stamps, Medicaid)

1-800-692-7462

Welfare Fraud Tipline

844-347-8477

Workers' Compensation

1-800-482-2383

Medical Care



Clarion Hospital

One Hospital Drive
Clarion, PA 16214
butlerhealthsystem.org/clarion-hospital
814-226-9500

Clarion Psychiatric Center

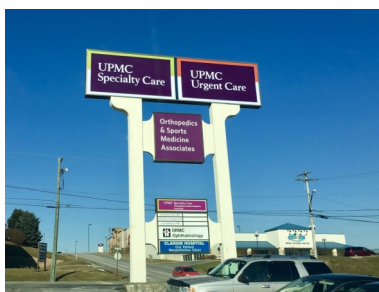
2 Hospital Drive
Clarion, PA 16214
www.clarioncenter.com
800-253-4906

Keeling Health Center (University)

840 Wood St.
Clarion, PA 16214
814-393-2121

Magee Women Specialty Services

1008 S 5th Ave
Clarion, PA 16214
814-223-9280



Primary Health Network

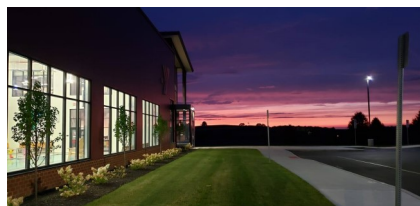
(family medicine, dental, behavioral health, pharmacy)
30 Pinnacle Dr.
Clarion, PA 16214
814-223-9900

UPMC Urgent Care - Clarion

18 Sportsman Dr.
Clarion, PA 16214
814-226-6062

Staying Fit

CLARION COUNTY YMCA



The Clarion County YMCA serves our community with a professional and qualified staff, state-of-the-art equipment, and numerous health, wellness and exercise classes.

Their air-conditioned facility offers you a wide variety of wellness, fitness and strength equipment that will help meet all of your conditioning needs.

The YMCA provides many different programs for the youth of the community including basketball, swimming, soccer, flag football, and even providing off-season and pre-season conditioning to local high school athletic teams.

The Clarion County YMCA just relocated into a brand new state-of-the-art facility in 2019. The new facility features an indoor heated swimming pool, a child care center so you can workout worry-free, and many more new amenities. They also feature a large parking area.

For more information on programs and rates contact:

Clarion County YMCA
499 Mayfield Rd
Clarion, PA 16214
814-764-3400

Clarion University Rec Center

Clarion University strives to provide the students of the university with a state of the art recreational center. The recreational center is complete with 3 full sized, multi-purpose gym courts surrounded by a four-lane track, complete cardio work out area overlooking a 4800 square foot weight-room, as well as a climbing wall and an aerobic room.

Aside from just working out, the recreational center also offers indoor and outdoor recreational equipment available for checkout while using the facility and can even be checked out over night.

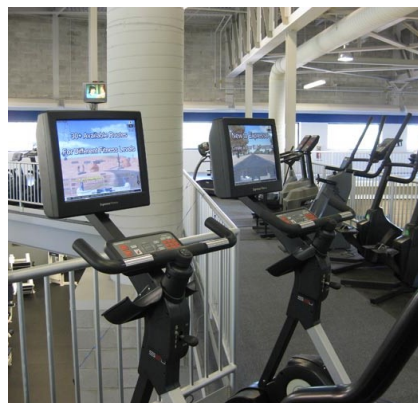
The multi-purpose gym courts can be reserved for basketball, volleyball, tennis, badminton, and soccer. The university also offers several workout classes. Check the bulletin board at the

recreational center or contact them for an updated list of classes and events.

At this time, usage of the Rec Center is strictly limited to students only.

For more information contact:

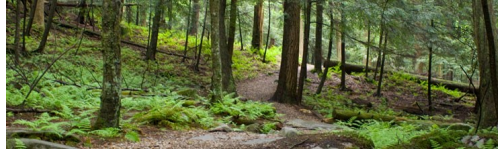
Clarion University Rec Center
840 Wood Street
Clarion, PA 16214 814-393-1667
www.clarion.edu/reccenter/index.htm



Cook Forest State Park

Located only a few miles north of I-80 in northwestern PA, Cook Forest is a popular year-round destination for nature lovers and outdoor enthusiasts. A wide range of outdoor activities and local attractions make for a memorable and relaxing vacation. You can canoe one of the state's most scenic rivers, visit a dude ranch, ride a water slide, or spend a day at the spa.

Rated one of the top 50 state parks in the nation, Cook Forest has over 7,000 acres of woodlands, including a National Nature Landmark: the park's splendid "Forest Cathedral", a stand of 200 to 350 year old white pines and hemlocks measuring over three feet in diameter and towering almost 200 feet high. Each year 1.6 million visitors from all over the world come to experience the breathtaking scenery, explore



hundreds of miles of hiking trails winding through the forest, catch glimpses of wildlife, hunt and fish, float down the Clarion River on canoes, kayaks, or inner tubes, and cross-country ski. With its ancient, primeval woodlands, Cook Forest is a paradise for birdwatchers and a prime habitat for warblers and other bird species, including owls, bald eagles and wild turkey.

In addition, Cook Forest offers numerous activities and attractions that appeal to both kids and adults. The region boasts several family fun parks filled with activities. Throughout the summer and fall, craft classes are offered at the Cook Forest Sawmill Craft

Center, which is also home to the 200-seat Verna Leith Sawmill Theater.

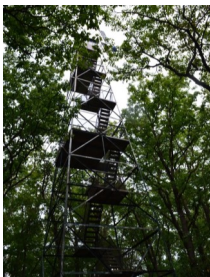
The Cook Forest area is loaded with adventure, dining, shopping, and weekend getaways. For more information on Cook Forest please call: 814-744-8407 www.cookforest.com

More information about Northwestern Pennsylvania's Great Outdoors can be found at www.visitpago.com or by calling 800-348-9393.



Things to See and Do in the Cook Forest Area

FIRE TOWER AND SENECA POINT



In 1929, the Cook Forest Fire Tower was built to give the fire-fighters a 15-20 mile view of the area. The tower is 80-feet tall and remained in service until 1966.

Since then, it is a popular spot come and see the breathtaking beauty of the northwestern Pennsylvania forests and countryside. Visitors can park their cars and



walk a short distance to the fire tower or to Seneca Point Overlook,

and witness the spectacular beauty for themselves from an elevation of 1600 feet.

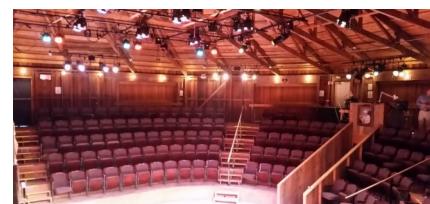
EDUCATIONAL PROGRAMS



Cook Forest State Park offers a variety of environmental education programs for pre-school through grade 12.

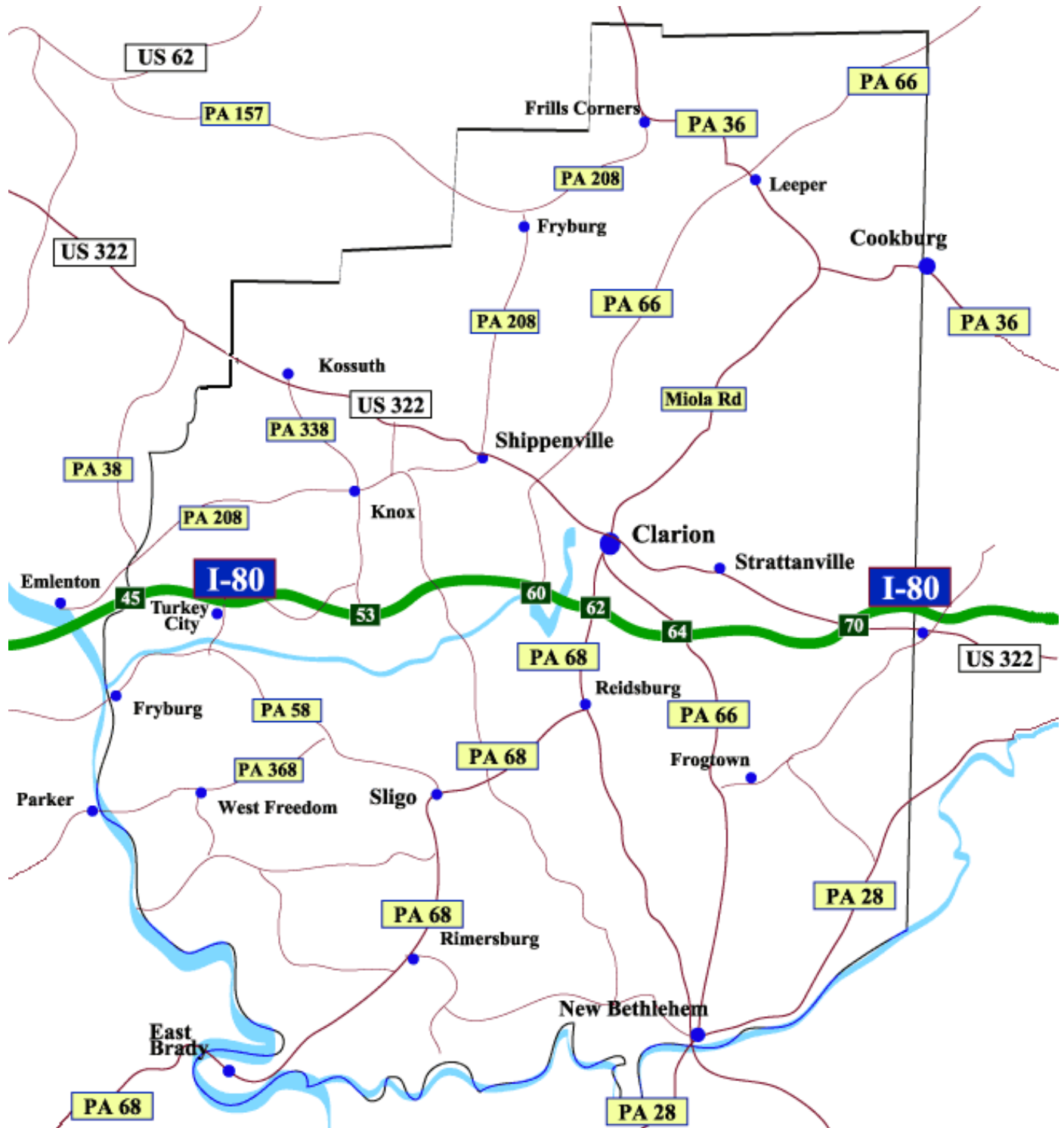
Near the Sawmill, you'll find a self-

guiding trail that provides information about the history of the Civilian Conservation Corps in Cook Forest. During the summer season, you can take advantage of "environmental interpretive programs" or take a weekly interpretive Trail Walk.



VERNA LEITH SAWMILL THEATRE

The Verna Leith Sawmill Theatre is a 200-seat theatre attached to the Sawmill Center. It opened in 1984, and since then visitors have enjoyed plays, musicals, and other entertainment throughout the summer season.

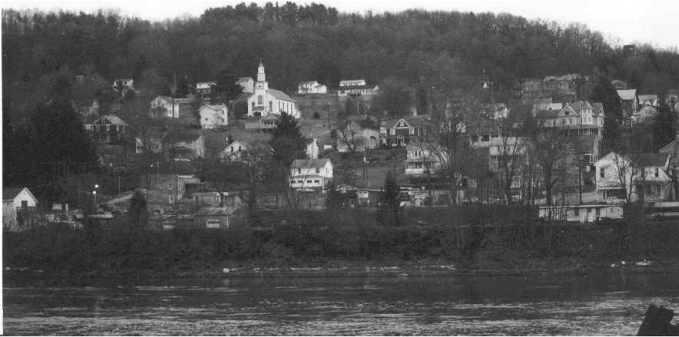


Clarion County is as rich in history, culture, and tradition as it is in beauty and landscape. From daring frontier scouts to entrepreneurs, horse thieves to the Underground Railroad, look into the history of the area and you can immerse yourself in stories of exploration, expansion, and lore.

With local celebrities, pride and rivalry among local sports teams, annual festivals and celebrations in almost every municipality throughout the year and pure hometown pride, Clarion County is a safe, friendly place to live, raise a family, and start a history of your own.

The next few pages will highlight each of the major municipalities in Clarion County and show you some of the reasons we are proud of our wonderful community.

East Brady - "Playground of the Allegheny"



Bend got its name. This view of the charming little village below is a photographer's dream. For many years this was a

When people speak of the East Brady and Brady's Bend area in historic terms, the name Captain Samuel Brady is a name that connotes daring feats and exaggerated prowess.

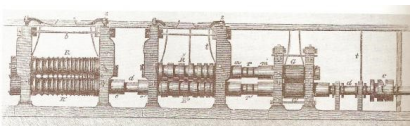


Captain Samuel
Brady

Captain Brady was a frontier scout that was primarily responsible for the settlement of the area through encounters with white settlers.

Once the site of the greatest iron foundries in America, Brady's Bend was the home of the Great Western Iron Works which operated between 1839 and 1871. The plant produced the first "T" rail made west of the Allegheny Mountains.

East Brady hosts fantastic views



Sketch of 'T'-Rail as was made at the
Great Western Iron Works

of the beautiful Allegheny River including a 1500' panoramic view from "The Narrows", Brady's Bend's scenic overlook of the horseshoe-shaped bend in the Allegheny River surrounding the town and from which Brady's

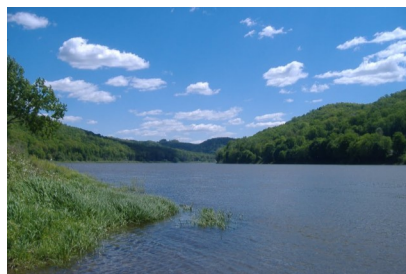
launch site for daring hang glider enthusiasts but the activity has since been banned due to safety reasons, and an observation deck has been constructed for locals and tourists alike to have the opportunity to take in the sights and photograph the beautiful landscape. Year round the view is breathtaking, but as in the rest of the area, the best times are in the



"The Narrows" overlooking Brady's Bend

spring and autumn months.

The Allegheny river is also a recreational paradise. The river provides fishing for bass, carp, catfish, musky, northern pike, and walleye. The area also has superb angling for trout fishing.



The Allegheny River at East Brady is also a favorite spot for boaters and skiers with a launch provided by the Fish Commission. There are no horsepower restrictions on the river for boaters. Other activities include bicycling, jogging and more. Snowmobiling, skating and sledding are all popular activities in the winter months.

Approximately 950 people live in East Brady. Each year they celebrate their hometown pride with their annual Riverfest which typi-



Jim Kelly, retired quarterback of the
Buffalo Bills

cally includes a fireman's parade, food and craft vendors, live music, carnival rides, games, fireworks, and much more. You may even spot Jim Kelly, former quarterback of the Buffalo Bills and another source of hometown pride.

Each year, many residents open their homes for the annual craft show and sale, called "We Believe Christmas". Usually held the Friday and Saturday following Thanksgiving, you can spot participating homes by looking for the Santa Claus flags in the lawns of participating residents.

Emlenton - "Your Gateway to Oil Country"



A few years prior to 1820, Andrew McCaslin, an enterprising young Irishman, traveled up the Allegheny River on a flat boat in search of building stone. Enchanted with the beauty of the surrounding hills, McCaslin settled on the site which later became the Borough of Emlenton.

In no time, McCaslin was joined by other adventurous souls and soon a wharf and a tavern were established, creating a village. By 1834 homes were being erected. Lumbering became a prosperous business and by 1839, twenty iron furnaces were in operation within a 16-mile radius of the community. Emlenton received its name from Hannah Emlen, the wife of Joseph Fox, a wealthy Quaker who owned vast acreage in Venango and Clarion Counties.

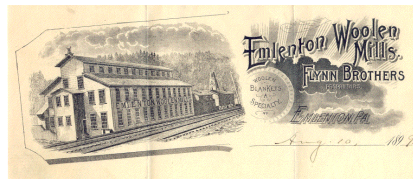
Emlenton was well established as a trading center when the first oil well was drilled just outside Titusville in 1859. Soon "black gold fever" radiated southward and in 1867 Emlenton's first oil well was drilled on Ritchey Run.

In 1882 the Emlenton Gas Light & Fuel Company was formed—the first organized natural gas company in Venango Co., one of the first to be chartered in the state and the third of such in the United States. This was the beginning of the Columbia Gas System.

It was oil money, too, that made it possible for the Flynn brothers to

put up a mercantile and state-of-the-art woolen mill in Emlenton in 1888. They produced woolen goods, the fleece carded and dyed and woven into blankets which sold coast-to-coast. The mill was destroyed by fire in 1901.

During the same period local oil producers banded together in



1891 and formed the Emlenton Producers Oil Company. Other oil companies in the region were organized and in 1931 a merger among 19 firms resulted in the formation of Quaker State Oil Refining Corporation. In 1990, the local Quaker State plant was sold and became the Petrowax Corporation, then Astor Corporation. The last owner was Allied Signal who closed the plant in the Spring of 2000.

Visit Emlenton today and see the revitalization of a small town as it



happens. Enjoy stores, antique shops, restaurants, and the quiet, scenic Allegheny River.

One of the most notable sights in Emlenton is The Emlenton Bridge. The bridge is 270 feet above the river and until 1971 was the highest bridge in the In-



terstate Highway System. Another notable fact about The Emlenton Bridge is that it technically is located in three different counties. One side of the bridge is in Venango County. The other side of the bridge is in our beautiful Clarion County, and the southwest abutment is technically in Butler County. Still the fourth highest bridge in the system, it also remains the highest road bridge in Pennsylvania and driving across will definitely provide a beautiful panoramic view of this lovely town.

With a population of almost 3,150 people, you'll find plenty of hometown pride in Emlenton. Each July, a trip to the town will find you submersed in their Summer Festival, a weekend festival filled with fun including arts and crafts, a fishing derby in the Allegheny River, talent show, live entertainment, car cruise, parade, fireworks, and more.



Knox - "Horse Thief Capital of the World"



Knox had its beginnings in the early 1800's when Mr. J.G. Mendenhall purchased 20 acres of wooded land in what is now Elk Township, Clarion County. The village that grew on this site was named "Edenburg" for the natural beauty of the area.

Edenburg remained a quiet crossroads town until oil was discovered in the area in 1873. The town's population ballooned to over 2,000, and many businesses, including two banks, seventeen hotels, and an opera house, sprang up.

The little town thrived for several years until a series of destructive fires in the late 1800's, as well as the end of the local oil boom, caused many residents to leave, ending this period of Knox's history. Those that stayed worked hard to rebuild their community.

Renamed Knox in 1934, the town has established itself as one of the most successful communities in Clarion County. With a population of approximately 1,118, Knox boasts a post office, many restaurants, a bed and breakfast, and the famous Knox and Kane Railroad. The railroad used to be a



wonderful tourist attraction for rides through the Allegheny Forest, but had to close down after a tornado touched down in 2003.

The Knox community holds an annual Horse Thief Days each year in August. Horse Thief Days actually commemorates another part of the history of this quaint small town.

According to local legend, Sebastian Boston "Boss" Buck started stealing horses and painting them

"BOSS" BUCK.



so that when he resold them, their real owners wouldn't discover that the horses were in fact theirs. He and his gang continuously moved a string of stolen horses from Kentucky to Maine. Buck wasn't the only horse thief in the area, but he was considered to be the leader among the thieves, and was considered the most notorious horse thief in US History. Boss Buck spent much of his time riding his horse trail, but his residence and headquarters were reputedly located near the borough of Knox, PA, hence the nickname "Horsethief Capital of the World" and the reason for the name of the town's annual celebration.

The week long event is a fun, family event that includes a parade, sidewalk sales, bike races, car show, kiddies parade, chicken

barbecue, and much, much more. For information on this event call: 814-797-2058

Each year, many residents participate in "Once Upon a Christmas". Locals open their homes to the public for a holiday open house filled with decorating and gift ideas, arts and crafts of all kinds. Watch the lawns, typically the weekend before Thanksgiving, for cheerful snowmen to guide you to the open house locations.

Knox is also home to the late Ross A. McGinnis. Ross was a 19 year old soldier in the U.S. Army who on December 4, 2006 bravely gave his life to save his comrades by throwing himself onto a grenade that was thrown into the Humvee he and four other soldiers were traveling in. Ross was posthumously awarded the Medal of Honor, the United States' highest decoration for bravery.

Knox is accessible off of Exit 53 on Interstate 80.



For more info:
Knox Borough
620 S Main St.
Knox, PA 16232
814-797-1376

New Bethlehem - Home of the Annual "Peanut Butter Festival"



The small town of New Bethlehem, which is located just ten miles south of Exit 64 off of I-80 on Route 66 south, was originally named Gumtown. The name Gumtown came about after a group of men went out searching for honey. The men would often go out and cut down a bee tree and collect the honey and carry it home. Henry Nolf, one of the pioneers of southern Clarion County and a very active citizen of the community, had accompanied these men. He very enthusiastically cut down a gum tree, which had no bees. His comrades did not try to stop him and instead dubbed him "Gum" Nolf. The first name used for the settle-



ment was then "Gumtown" in honor of Mr. Nolf, one of its leading citizens and operator of a grist mill, saw mill, and store. In 1756, a Moravian Christian, Frederick Post, left eastern Pennsylvania and came west with the intention of starting an Indian mission. He crossed the Clarion River, then known as Stump Creek, and continued south. When he saw the valley that later became known as New Bethlehem, it is reported that he exclaimed, "It looks like Bethlehem." Whether

he was referring to the settlement in eastern Pennsylvania or to Bethlehem of Judea, it has never been made clear. The community began to be called Bethlehem and later the postal authority add-



ed the word "New" to distinguish it from the town in the east. Harry B. DeViney founded the H.B. DeViney Company in 1946 and used the old New Bethlehem Brewing Company's facility to



create peanut butter for the J.M. Smucker, Inc. company, which is the nation's leading producer of jams, jellies, preserves, ice cream toppings, natural and specialty peanut but-

ters, and natural fruit beverages. The H.B. DeViney Company changed its name to J.M. Smucker (Pennsylvania), Inc. in 1997, reflecting its relationship with the J.M. Smucker Company headquartered in Orrville, Ohio. Today, the New Bethlehem plant produces all of the peanut butter products under the Smucker's and Laura Scudder's label. A significant portion of its volume is exported.

In July of 1996, a devastating flood destroyed many homes. Redbank Valley High School was shut down. It took a few months



to clean and fix the damage until students were allowed to attend again. On a garage east of the Redbank Valley High School there is a line that shows how high the water level was at its highest point.

Proving that the town was resilient and strong, the Redbank Valley Chamber of Commerce organized a peanut butter festival later that very year, and it is now an annual event. The festival is held the second weekend after Labor



Day in September and includes carnival rides, crafters and sidewalk sales, food vendors, music, a parade, and lots of other fun.

For more information on the New Bethlehem area, contact the Redbank Valley Chamber of Commerce at:

Redbank Valley Chamber
309 Broad Street, Suite 2
New Bethlehem, PA 16242



Rimersburg - Home of the "Cookie Daze Celebration"



Rimersburg is located in the southwestern part of the county. The town was formed in 1839 and named after John Rimer, one of the original settlers of the area. As the first to build a home in the newly created community, it was decided that the town would thereafter be named for him. The town was officially incorporated in 1853.



In the earliest days, two tanneries, a livery and a gristmill composed the town's industries. In the latter part of the 1850's, a furniture store, a foundry, a harness shop and a wagon factory were listed among the town's industries.

Rimersburg has always played an important part in the county's development, being a stopping place for the Underground Railroad through Rev. John M. McAuley

(pictured left), the site of the old Clarion County Institute (1858-1899), and the center of the coal producing area in the county.

During the late 1930s, 70% of the coal in the area came from The Keystone Mining Company, a local employer of over 900 miners who were responsible for digging



over 800,000 tons of this vital natural resource. Rimersburg serves a shopping area composed of approximately one-third of the county's



inhabitants and possess some of the finest stores in the area. Its first store, that of James Pinks, conceded by many to be the first store in the county, was operating as early as 1812. Here calico could be had at 50¢/yd, coffee at 75¢/lb, tea at \$5/lb and salt at \$5/bushel. From this humble beginning, the town has continued to supply the needs of the surrounding area.

Until 2010, Rimersburg was also home of the Davis Cookie Company, a cookie factory that



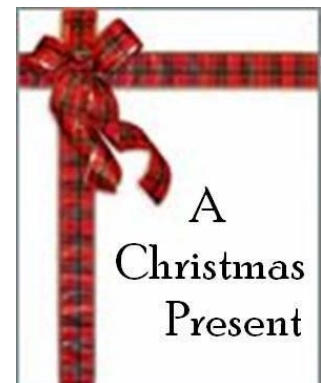
once produced the famous Archway Cookies and most recently produced their own local brand Josephine's, named after the co-founder of the company. The cookie plant was purchased and reopened in 2011 by iBake foods. One thing that Rimersburg is known all over the area for is their

annual summer festival, the Cookie Daze celebration. This celebration began in 1983 by the Rimersburg Area Chamber of Commerce and included events such as a softball tournament, sidewalk sales, flea market, arts and craft show, cookie bake off, parade, music, a car cruise and much more. In recent history, the Cookie Daze celebration has scaled back to strictly be a Cookie Daze Car Cruise.

Rimersburg is another town whose residents enjoy sharing



their craft and artwork with the public during their open house they call "A Christmas Present". The first weekend in November (as long as Halloween doesn't fall on Wednesday) if you watch for signs shaped like Christmas presents in the lawns of many residents, you can feel free to go inside and find handmade crafts of all types as well as baked goods, and the local churches even serve lunch to visitors.



Sligo - "A Wee Bit o' the Emerald Isle in Southern Clarion County"



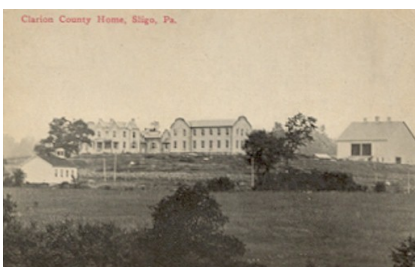
Sligo had its beginnings in 1840 and was named during the Iron Era in 1845. The name came from the county Sligo, Ireland which is the homeland of the Lyon family who built a pig iron furnace in 1845 near the settlement.



The new town of Sligo was laid out by the furnace company in 1871, and shortly after a brick store and a hotel was constructed. Several churches and a school followed and the Borough of Sligo was officially recognized in September of 1878.

Although the community is small, with a population of just 656, it has earned the reputation of being one of Clarion County's most active and well organized boroughs.

Sligo houses two historical build-



ings, still standing but now in use for other purposes. The first, the County Home, once a self-sustaining county poor farm, was converted into an apartment building and now houses a yoga retreat and ashram. The actual nursing home moved into a brand new facility built just next door (Clarview Nursing and Rehabilitation Center).

The second of the two historical



buildings still in existence once was the home of the Sligo High School, pictured below. Many residents from the baby boomer era still remember their transition from this facility (now a community recreation center) to the newer Union Joint High School (now simply known as Union High School) in Rimersburg. As with any small town, Sligo is shrouded in myth and intrigue. It



is said that Sligo is inhabited by gnomes that transform the borough into an Irish wonderland yearly, but others simply believe that the locals are celebrating their own form of hometown pride

with their "Sligo Irish Festival" where you will find food, a parade, fireworks, and other fun during their weekend event.

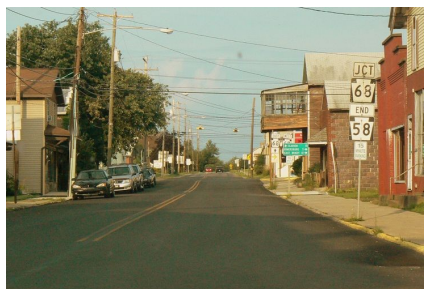
Sligo hosts a pool park complete with Olympic size pool, pavilions, ball fields and playground. Sligo also supports a full service



bank, a corner restaurant, a mom and pop-style grocery store, a 24-hour convenience store, and a full house converted into an antique shop. The town is completed with a recreation center and four community churches.

Each November many crafty residents of Sligo open their homes to visitors to come and enjoy viewing, sampling, and purchasing their handiwork and tasty treats during their "Homes for the Holidays". The Irish theme of the town remains as the signs in the yards are in the shapes of shamrocks with Santa hats and the name of the "craft shop" painted on them.

As a very low crime area with a friendly atmosphere, Sligo is an area of Clarion County to not miss.



Things to do and Places to Go - Clarion Area



BARROW-CIVIC THEATRE

The Barrow-Civic Theatre Main stage is a premier performance space for the region. It seats 497 people, all with unobstructed views of the main stage and performance space. The theatre has seating for patrons with special needs and can accommodate wheelchairs along with the rest of your party. The theatre hosts various events and performances including musicals, orchestra performances and more. For more information call 814-432-5196.



BEAVER CREEK NATURE AREA

Anyone interested in fishing or bird watching should take a trip down route 208 to Beaver Creek Nature Area. It has 850 acres of lakes stocked with Bass and Bluegill, and is ideal for picnics and hiking.



CLARION COUNTY HISTORICAL SOCIETY

The Clarion County Historical Society Museum is located at 18 Grant Street in downtown Clarion. Originally constructed by Thomas Sutton in 1850 and then purchased in 1908 by Mr. and Mrs. John A Ditz, the Sutton-Ditz Museum is maintained and operated by the Clarion County Historical Society. It has period rooms, a Military Room, a DAR Women's History Room, a "General Store", Industry Exhibits and changing exhibits from the Society's collections. The society holds lectures, classes, Victorian Teas, Etiquette Classes for children and college students, and many special events. for more information call 814-226-4450.

CLARION COUNTY PARK



The Clarion County Park has a wide variety of recreational and educational opportunities available free to the public. It has several baseball fields, a basketball court, a tennis court, horse

arena, an archery range, a nature trail, a children's garden, and pavilions. For more information call 814-226-9230.



CLARION FREE LIBRARY

The Clarion Free Library is the place to go if you're looking for a quiet place to read in a beautiful location. It is also a great source for local genealogy, computer resources and other reference materials. They also have a wonderful children's area for a great place to take the kids on a rainy day. For more information call 814-226-7172.



CLARION OAKS GOLF CLUB

Clarion Oaks features two different versions of championship-style golf. The front nine meanders through a towering oak forest and takes advantage of the area's natural terrain providing a more traditional appearance. The back nine is known for its lack of trees, menacing winds, wide rolling fairways, and extremely

Things to do and Places to Go - Clarion Area

large greens, making it reminiscent of a British Open links course. For more information call 814-226-8888



DEER CREEK WINERY

The Deer Creek Winery offers free tastings, up to 4 tastings every time you visit. Buy a bottle of wine to take home or buy a glass of wine, sit on their porch, and enjoy the surroundings. Their first wine was the Deer Creek Raspberry which is still grown right there on the farm and is 100% raspberry and contains no grapes. They currently have more than a dozen different types of wine. For more information call 814-354-7392.



ESCAPE ROOM CLARION and 9 WORLDS AXE THROWING

Escape Room Clarion and 9 Worlds Axe Throwing are both unique and interactive entertainment experiences that are great for co-worker

team building, couples looking for something different to do on a date night, bachelor or bachelorette parties, birthdays and other celebrations, and perfect for a group of friends looking for a challenge and a lot of fun, all in one building. For more information call or text 814-205-3150.



HI-LEVEL GOLF COURSE

This 18-hole course features hallmarks of Pennsylvania golf. The course, opened in 1965, is a challenge for the short game. On the front 9 you have three challenging par 3's. The whole course gives you a chance to open up on your drives, particularly the 675 yard par 6. For more info call 814-797-1813.



KALYUMET FORE FUN

Kalyumet Fore Fun is the perfect location to hold your next event, party or group outing. Play a round of mini-golf on their family friendly course. Try the action filled Outdoor Laser Tag Experience. Turn tickets into treasures at the largest arcade in the area. Enjoy pizza, wings and other treats in air-conditioned comfort. Keep cool with a soft serve

ice cream cone, sundae or shake. Explore their virtual reality escape room and more. For more information call 814-744-8768.



THE BRICK HOUSE BED & BREAKFAST

Rich in history, the Brick House stands tall, sturdy and proud. It is three stories of exquisite detail, elegant comfort and rustic beauty. Discover a place that will take your breath away season after season. Surprises are around every corner. For more information call 814-227-3567.



THE MEADOWS ORIGINAL FROZEN CUSTARD

The Meadows Original Frozen Custard is open year round. Each day they make fresh and serve vanilla and chocolate frozen custard as well as two flavors-of-the-day. They also offer a fat-free no sugar added vanilla yogurt and a low-fat-flavor. Try out their drive through for quick service while you are on the go or check out their eat-in parlor. For more information call 814-226-6677

Things to do and Places to Go-Foxburg Area



FOXBURG WINE CELLARS

Located on Main Street, Foxburg Wine Cellars

has a variety of over 30 wines which are made and bottled on location. It's been open since 2003 and sells meats, cheeses, and other wine-related items. During the summer, visitors can purchase a bottle of wine and sit on the patio. The winery is open year round, and wine tasting is available as well. For more information call 724-659-0021.

ART, WINE AND FOOD FESTIVAL

The Foxburg Art, Wine and Food Festival is an annual event held during October throughout the town of Foxburg. There is something there for everyone in the family. They have food vendors, local crafters and artists, free tours of the winery, an old-fashioned grape stomping, and canoeing on the Allegheny River and more. Admission is free with shuttle service available. For more information call 724-659-0021.

ALLEGHENY RIVERSTONE CENTER FOR THE ARTS

The Allegheny Riverstone Center for the Arts provides workshops, music, literature and theater programs. It's located on Palmer Street and is the home to a 1929 Wurlitzer Theater Organ. For more information call 412-894-8749.



LINCOLN HALL & RIVERSTONE EVENT CENTER

Lincoln Hall and Riverstone Event Center are ideal if you're looking for a location to hold a large meeting, conference or special event. Lincoln Hall holds 60-80 people and is in a theaterstyle arrangement with a stage and podium. Riverstone Event Center is great for large receptions and events and holds up to 200 people. For more information call 412-894-8749.



ALLEGHENY GRILLE RESTAURANT

The Allegheny Grille offers spectacular dining with a view along the Allegheny River. It has a private banquet room which can accommodate up to 80 guests and a courtyard ideal for wedding receptions. The Grille has a great menu, offers Sunday breakfast and lunch buffets, as well as homemade desserts. For more information call 724-659-5701.

FOXBURG GOLF COURSE & COUNTRY CLUB

If you make a turn down Harvey Road, you'll find the Foxburg Golf Course and Country Club, which has been open since 1887 and is the oldest golf course in continuous use. The American Golf Hall of Fame is located on the 2nd floor of the country club. Golfers can receive a discounted meal when they bring their golf receipts to the Allegheny Grille. For more information call 724-659-3196.



FOXBURG INN

The Foxburg Inn has 24 king or double occupancy rooms available with jacuzzi tubs and private fireplaces. The Inn has special packages, that include extra amenities. It also has a game room with poker tables and a conference room that holds 10 people. It's located minutes off of I-80.



BUTTON HOUSE

The Button House in Foxburg is a one of a kind museum with a 25 Year collection of vintage and antique buttons. Each is a miniature work of art. Please allow approximately 2 hours for the tour and show. For more information call 724-659-0180.

Things to do and Places to Go-Cooksburg Area

CLARION RIVER LODGE RESORT & SPA

The Clarion River Lodge is nestled in the heart of Cook Forest State Park along the Clarion River. Once a secluded private estate the Lodge now boasts twenty tastefully decorated rooms, restaurant with outdoor dining, pub, and is home for nature, art and entertainment in the Forest. Enjoy nature while sitting on the private riverbank, become inspired in the art studio, or just relax with your favorite libation next to your own firepit on the patio. For more information call 814-744-8553.

COOKSBURG CAFE

The Cooksburg Café offers Hershey's Ice Cream, burgers, fries, and other grilled foods. It's the perfect place to grab a snack after a long, relaxing trip down the river. For more information call 814-744-8601.



DOUBLE DIAMOND DEER RANCH

While in Cook Forest, visitors should stop and visit the Double Diamond Deer Ranch. This non-hunting ranch is a great place for families to learn about the deer, feed and pet them. There's also an antlered gift shop, and a nine-hole mini golf course. For more information call 814-752-6334.



FRENCH & INDIAN WAR ENCAMPMENT

During the month of June, Cook Forest and the Sawmill Center for the Arts host a French & Indian War Encampment with over 200 re-enactors. This event has many fun and interesting demonstrations which include cannon and muskets, blacksmithing, candle making, children's programs, and more. For more information call 814-744-8407.



GATEWAY LODGE

Take a drive down route 36 and stay at the Gateway Lodge. It has fireplace and Jacuzzi suites, or cabin rentals that sleep 2-8 people. Relax at The Woods Spa, or enjoy a meal at the Gateway Lodge Restaurant and Tavern. It has an excellent menu, over 130 local and worldwide wines, and the restaurant holds up to 80 people for special events. Holiday/gift packages are available. For more information call 814-744-8017.

LAUREL RUN GOLF COURSE

This is a great option for the golfer who's itching to get on the green. It's an executive 18-hole golf course in the town of Sigel on Catholic Church Road, and is open to the public. Golf lessons are offered, and it's affordable for anyone wanting to play. For more information call 814-752-2872.

PARKERS INDIAN TRADING POST

If you're looking for something special to take home, whether for yourself or someone else, Parkers Indian Trading Post on route 36 has a great selection. The Native American gift shop has pottery, dream catchers, Moccasins, jewelry, blankets, tours and more. For more information call 814-752-2882.



THE PALE WHALE CANOE FLEET

If you didn't bring your canoe along, The Pale Whale Canoe Fleet has rentals at Cooksburg Dry Goods which also serves as the Cook Riverside Cabins office. Kayaks and inner tubes are also available. Paddles and life jackets are included with canoe rentals, along with transportation up the river. Four, ten, fifteen mile or overnight trips are available. For more information call 814-744-8300.

WELCOME!

We hope that you have found this relocation packet as a helpful guide for you to get some initial information about the area.

If you have further questions contact The Clarion Chamber of Business & Industry at:
Clarion Area Chamber of Business & Industry
650 Main Street
Clarion, PA 16214
814-226-9161

www.clarionpa.com